



PANOSOL®

**SPECIAL CLOSING PANEL ANTI RODENT INTRUSION
(PROOFING)**

Rodents are often the source of nuisance and cost intensive damages (cut through cables and fibre optic lines, damaged electrical components, ...).

PANOSOL® is a white extruded fire resistant special PVC panel. It is used to close big openings in the masonry or cable entries. It creates a physical barrier that prevents rodents from entering.

PANOSOL® is already used by RTE, VNF, ORANGE and other public and private companies.

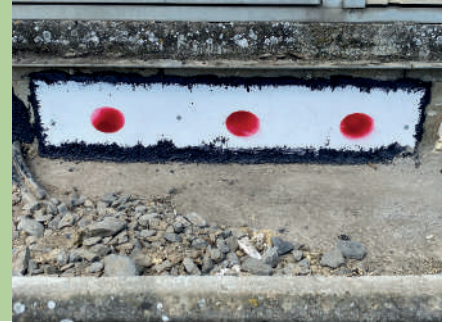
Application videos please see our internet site.



ADVANTAGES

PANOSOL® is a physical rodent anti intrusion (proofing) barrier:

- Proven: thousands of cable entrances electricity stations in Europe are protected
- Efficient: creates a physical barrier, that prevents rodents to enter the protected area
- Fire resistant: Class M1
- Water and weather resistant
- Easy to cut and mount
- Long life



INSTALLATION



- Cut PANOSOL® with a jig saw (or flex or metal saw) to format needed.
- Position the panel on the place required and pre-drill the holes.
- Screw the panel PANOSOL® tight.
- Apply the resin MASTISOL® on the edge of the panel to close side holes.

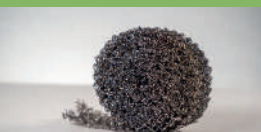
TECHNICAL DATA

Description	PANOSOL®
Form - Colour	Panel - White
Material density at 20°C (g/cm³)	0.55
Fire resistance - Class	M1 (NF P 92-507)
Water absorbtion	≤0.2%
Usage temperature (°C)	0° to 60°
Storage	Cool and dry
Environnemental compatibility	Recyclable
Packaging	4 Panels – 1200 x 596 x 10 mm

DEPENDING ON THE SITE TO BE PROTECTED WE RECOMMEND ALSO OUR OTHER ANTI RODENT INTRUSION PRODUCTS:



BROSSOL®-ROD



WAROSOL®T



MASTISOL®



COVER SOL®



BROSSOL®N



SOLTEC®

"We reserve the right to modify our products to achieve the optimal use. Company cannot be held responsible for wrong handling of installation errors of the products. This especially with regards to information given by the customer or to special features of the site to be protected."